

# Ridgewood Corporate Square

Ridgewood Corporate Square is a seven-office business park located one-half mile east of downtown Bellevue.



**245,312**

Rentable Square Feet

**Office**

Property Type

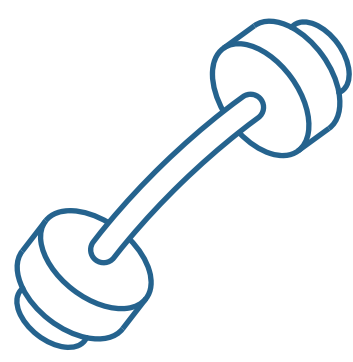
The property's location in Bellevue is central, and the city's transportation improvements enhance the property's already excellent access to the primary Eastside arteries and the Bellevue CBD.

Ridgewood Corporate Square is situated in a beautiful park-like setting, located just one mile southeast of the intersection of NE 8th Street and Interstate Highway 405 in Bellevue. Creating convenient access to downtown Bellevue, Interstate 90 and Interstate 405. The campus features include modern amenities, including collaborative work areas, conference and training rooms, a 24/7 fitness center with shower and locker rooms and secured bike storage, Poppinjay's Cafe, on-site management office with concierge services and outdoor plazas.

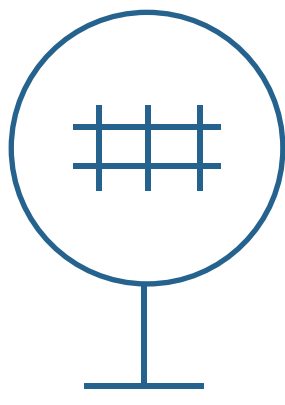
LOCATION	Bellevue, Washington	NO. OF BUILDINGS	7
PROPERTY TYPE	Office	SQUARE FOOTAGE	245,312

# Why People Love this Building

In addition to the modern amenities, parking is one of the asset's strengths and is provided in subterranean parking garages beneath each building and also via free surface parking lots.



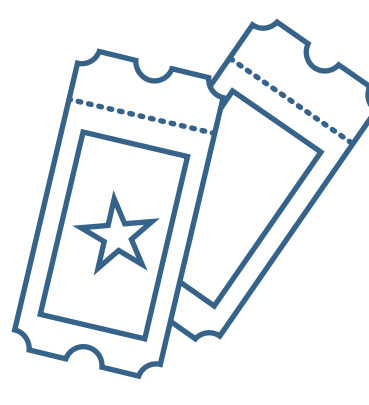
Fitness Center



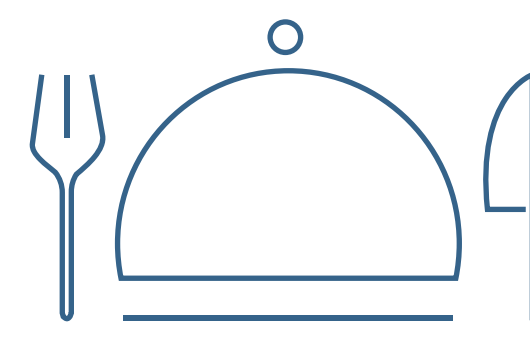
Transportation  
Nearby



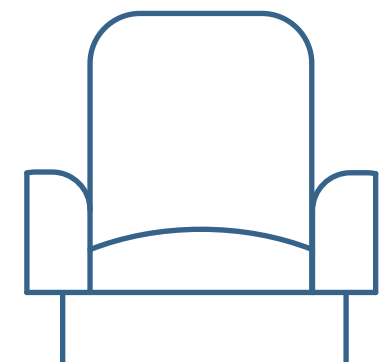
Shopping  
Nearby



Entertainment  
Nearby



Restaurants  
Nearby



Tenant Lounge

Accommodation Nearby

Conference Center

On-Site Management Office

U.S. Postal Service

Banking Nearby

EV Car Charging Stations

On-Site Parking

Bike Storage

Freeway Access

Outdoor Patio or Courtyard

Concierge Service

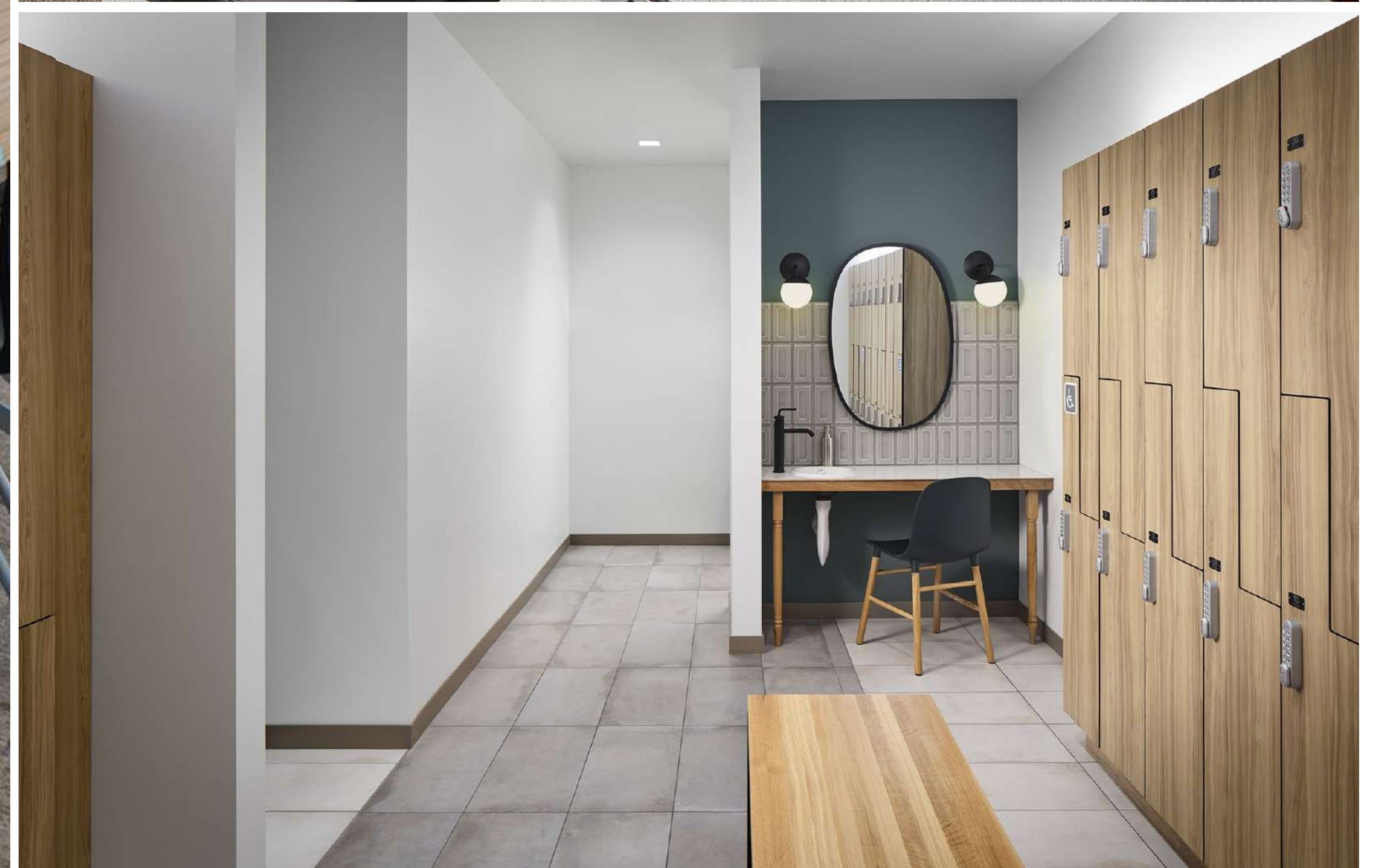
On-Site Café

Security



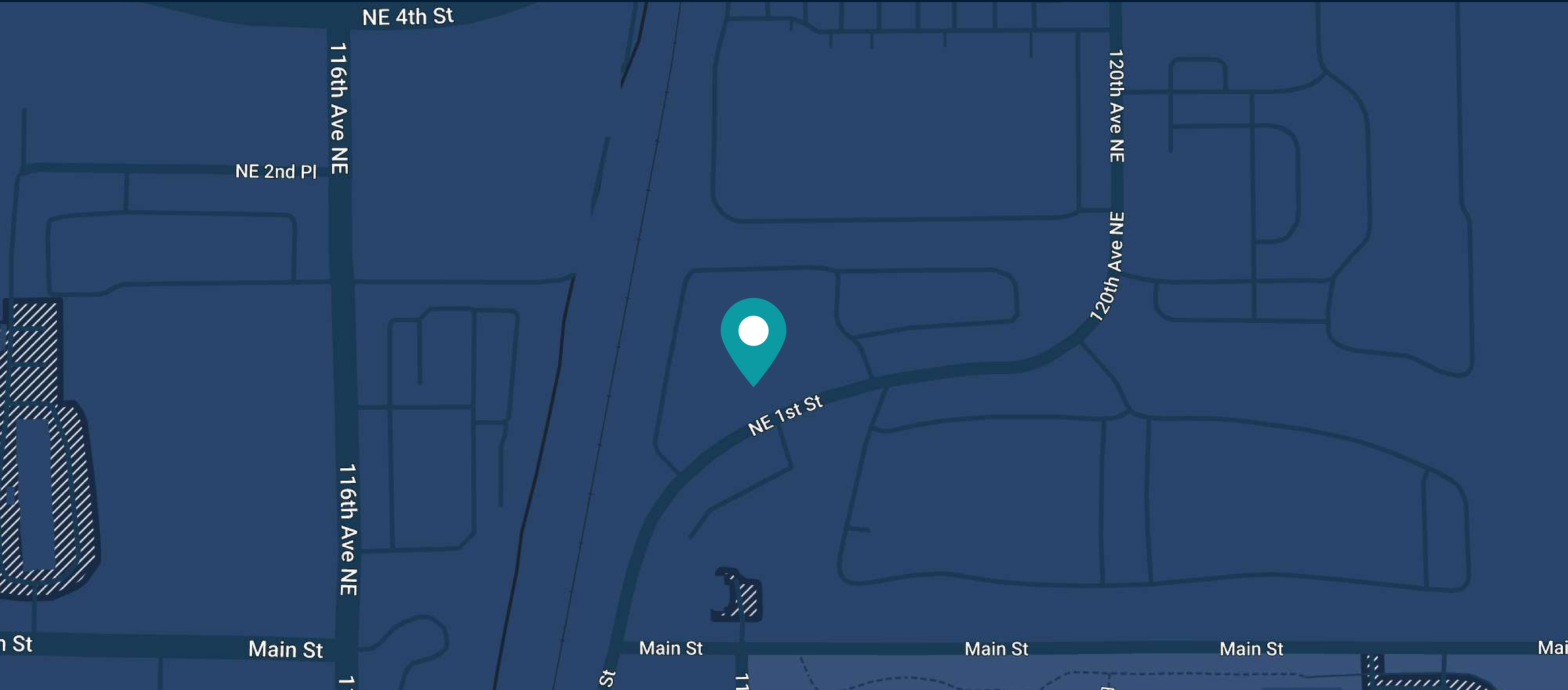
# Accolades





LOCATION

# 150-330 120th Avenue NE & 11900 NE 1st Street Bellevue, Washington State 98005



## Our Offices

### Corporate Headquarters

800 Newport Center Drive, Suite 700  
Newport Beach, CA 92660

(949) 417-6500

### Washington, DC Office

3003 Washington Boulevard, Suite 950  
Arlington, VA 22201

(202) 823-1230