

Millrock Park

Millrock Park is a Class A, four-building office park located in Cottonwood Heights, one of the best submarkets of Salt Lake City.



494,289

Rentable Square Feet

Office

Property Type

The land that Millrock Park is constructed on is unique as an Office Property Site because of the dramatic elevation changes within the 22 acre campus. This unique topography is Millrock’s advantage over all other Office properties in the Salt Lake Valley.

The 4 buildings containing 494,289 square feet of Class A office space occupy different elevations within the Park allowing for unobstructed 360 degree views from every building. The parking structures are largely underground. 75% of the parking stalls are covered keeping cars out of snow, rain and sun light. This design hides unsightly concrete structures below ground leaving 37% of the entire campus as GREEN SPACE, Truly a “Park.” In 2017 Millrock Park was the winner of the BOMA Utah Kilowatt Cup and Highest Performing Building.

LOCATION

Holladay, Utah

PROPERTY TYPE

Office

NO. OF BUILDINGS

4

SQUARE FOOTAGE

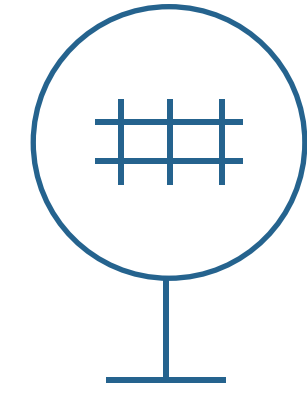
494,289

Why People Love this Building

The property is just minutes away from four Utah ski resorts and surrounded by the state's finest residential neighborhoods. This location is indisputably one of the most desirable spots for work, play and living in the Intermountain West.



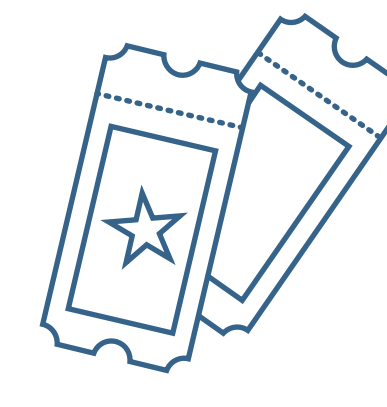
Fitness Center



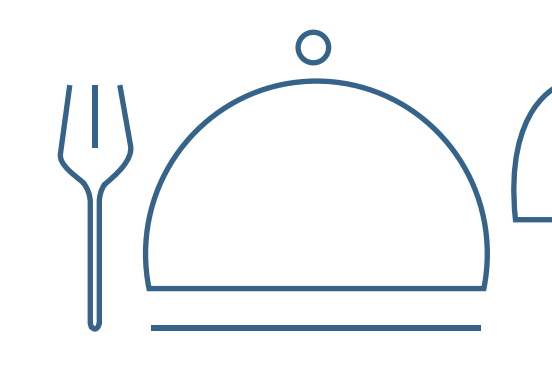
Transportation
Nearby



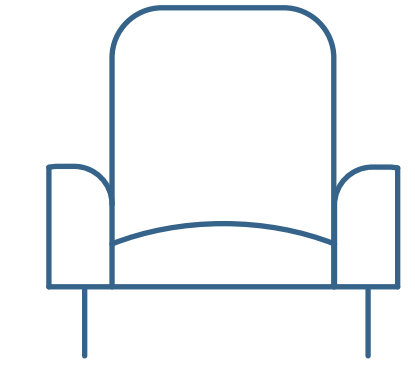
Shopping
Nearby



Entertainment
Nearby



Restaurants
Nearby



Tenant Lounge

Accommodation Nearby

Banking Nearby

Bike Storage

Conference Center

Energy Management System

Event Facilities

Freeway Access

High-Speed Internet

Major University Nearby

On-Site Management Office

On-Site Parking

On-Site Storage

Outdoor Deck

Security

U.S. Postal Service

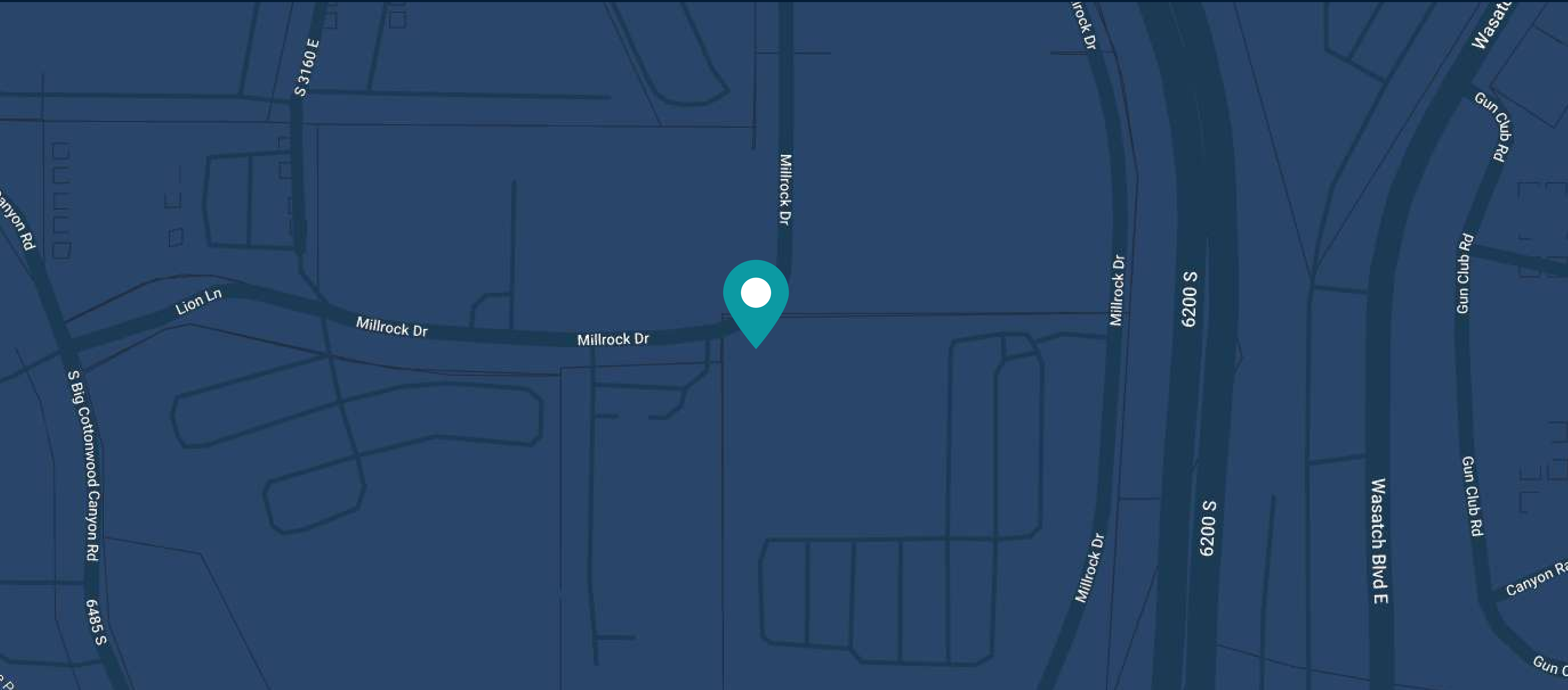
Accolades





LOCATION

6550 S. Millrock Drive
Holladay, Utah 84121



Our Offices

Corporate Headquarters

800 Newport Center Drive, Suite 700
Newport Beach, CA 92660

(949) 417-6500

Washington, DC Office

3003 Washington Boulevard, Suite 950
Arlington, VA 22201

(202) 823-1230