

515 Congress

515 Congress is a 263,058-square-foot, Class A office tower located in downtown Austin, Texas.



263,058

Rentable Square Feet

Office

Property Type

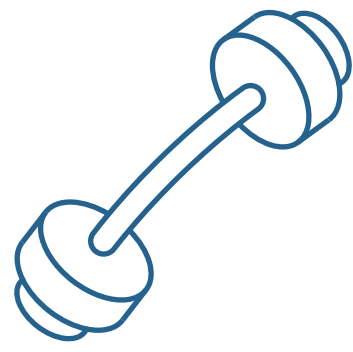
The 26-story, Class A building features approximately 12,000 square feet of street-level retail and offers full height, continuous windows with unobstructed views of the State Capitol, Hill Country and downtown.

Entrance to the building is through a two-story travertine marble-clad main lobby accented with floor-to-ceiling glass. 515 Congress is the premier office destination located in the heart of Austin's downtown business district, at the southeast corner of Congress Avenue and 6th Street. Within walking distance to the Texas State Capitol, Austin Convention Center, 6th Street Entertainment District and Lady Bird Lake.

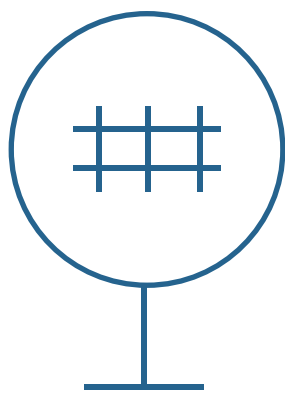
LOCATION	Austin, Texas	NO. OF STORIES	26
PROPERTY TYPE	Office	SQUARE FOOTAGE	263,058
NO. OF BUILDINGS	1		

Why People Love this Building

In addition to the many on-site amenities, it is within walking distance of numerous retail, hotel and restaurant amenities. It is the perfect work, play, stay environment.



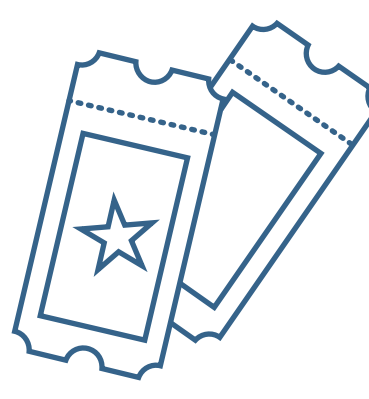
Fitness Center



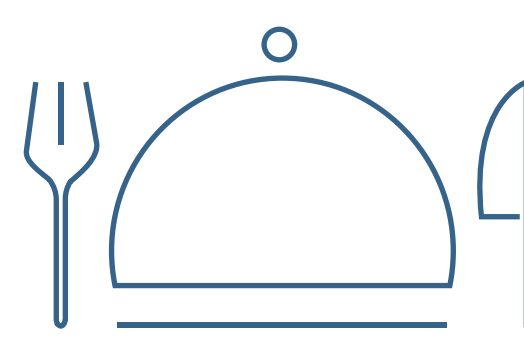
Transportation
Nearby



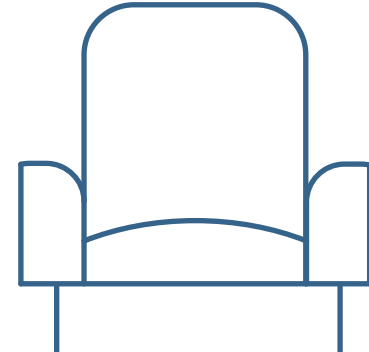
Shopping
Nearby



Entertainment
Nearby



Restaurants
Nearby



Tenant Lounge

24/7 On-Site Security

Coffee Bar

EV Charging Station

Mother's Room

On-Site Café

Visitor Paid Parking

Accommodation Nearby

Conference Rooms

High-Speed Internet

Move-in Ready Suites

On-Site Management Office

Bike Storage

Dry Cleaning Service

Janitorial

Notary

On-Site Parking

Car Wash / Detail On-Site

Energy Management System

Mail Room

On-Site Bank

On-Site Storage

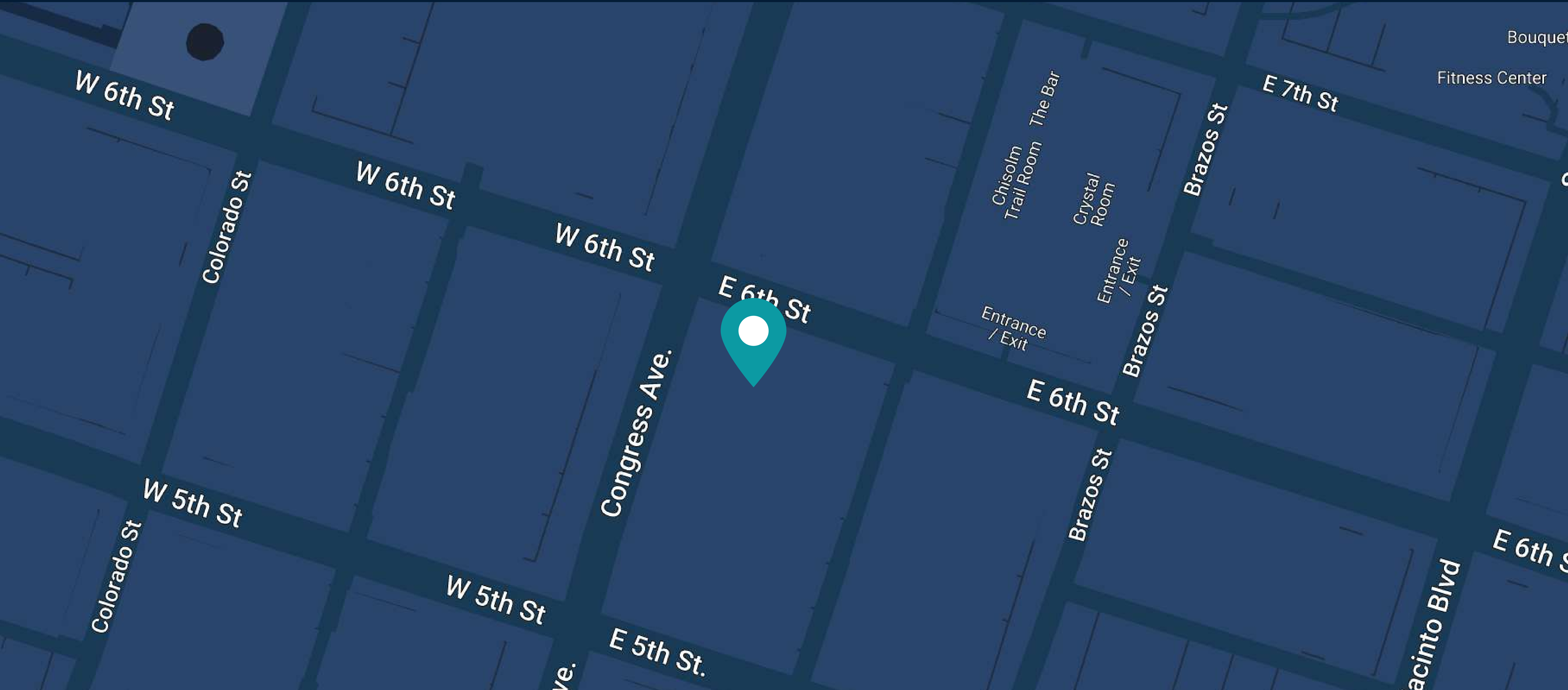
Accolades





LOCATION

515 Congress Avenue
Austin, Texas 78701



Our Offices

Corporate Headquarters

800 Newport Center Drive, Suite 700
Newport Beach, CA 92660

(949) 417-6500

Washington, DC Office

3003 Washington Boulevard, Suite 950
Arlington, VA 22201

(202) 823-1230