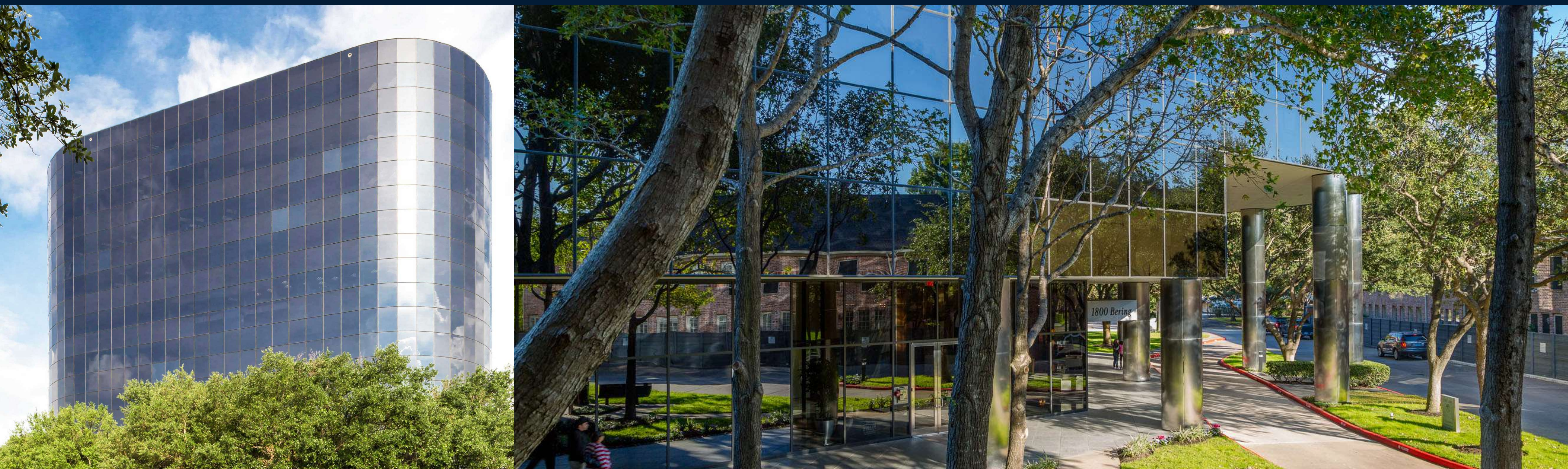


# 1800 Bering

Located in the heart of Tanglewood, 1800 Bering is a distinctive boutique office building on 2 acres surrounded by manicured grounds with beautiful mature trees, shrubbery and seasonal flowers.



**171,510**

Rentable Square Feet

**Office**

Property Type

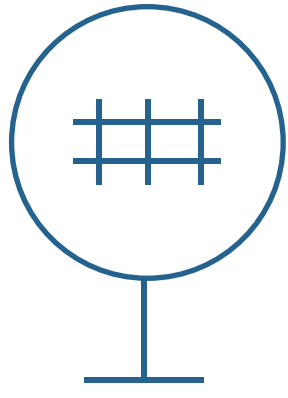
The building is in excellent condition having undergone significant upgrades and renovations since 2016 including updated lobbies on all floors, new elevator cabs, new flooring, updated monument signage, along with a complete change in the landscaping.

Located just west of The Galleria, the property features easy access to I-10, Loop 610 and U.S. 59, three major Houston thoroughfares, allowing for smooth access from any direction and easy entry in and out of the Galleria and surrounding neighborhoods. Additionally, the property is surrounded by walkable amenities including a fitness center, upscale retail and a variety of hospitality and entertainment options.

LOCATION	Houston, Texas	NO. OF STORIES	10
PROPERTY TYPE	Office	SQUARE FOOTAGE	171,510
NO. OF BUILDINGS	1		

# Why People Love this Building

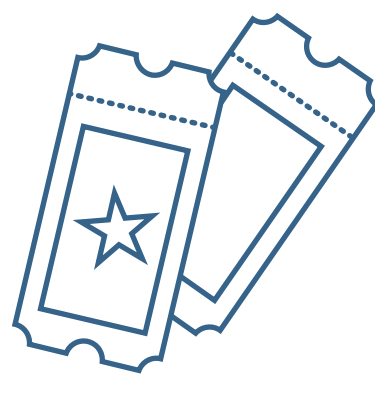
1800 Bering is the premier boutique office space in the area. It is proximate to Uptown Park and The Galleria and adjacent to Houston's most desirable residential neighborhoods.



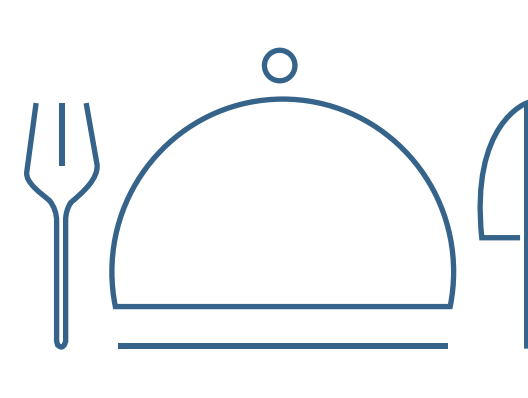
Transportation  
Nearby



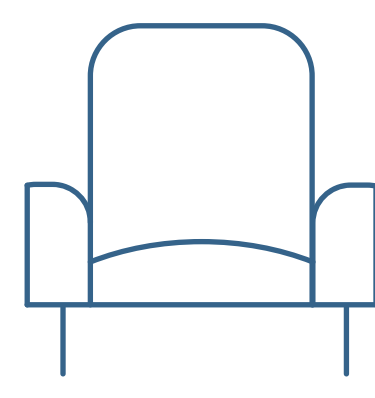
Shopping  
Nearby



Entertainment  
Nearby



Restaurants  
Nearby



Tenant Lounge



Security

Banking Nearby

Conference Center

High-Speed Internet

On-Site Café

On-Site Management Office

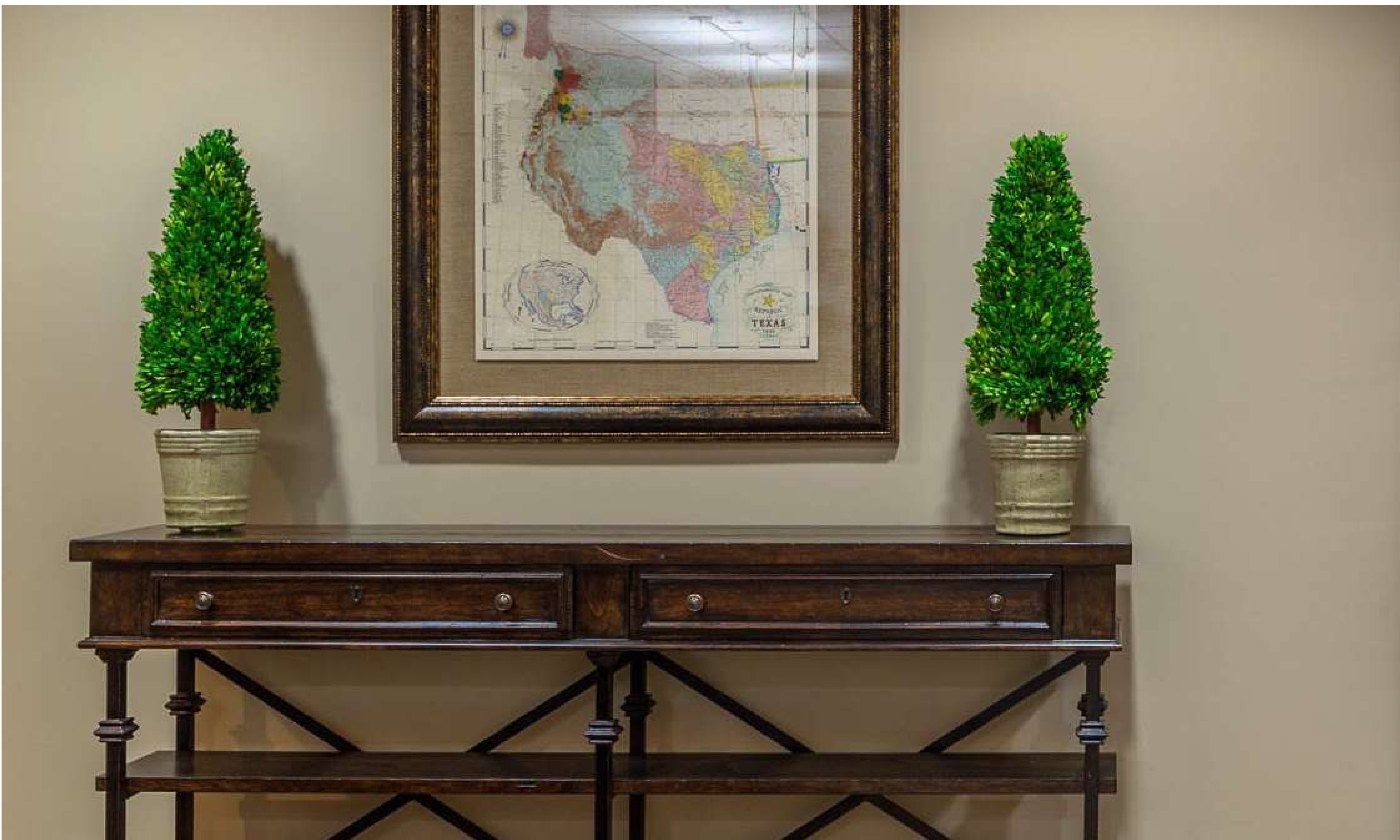
On-Site Parking

Outdoor Patio

U.S. Postal Service

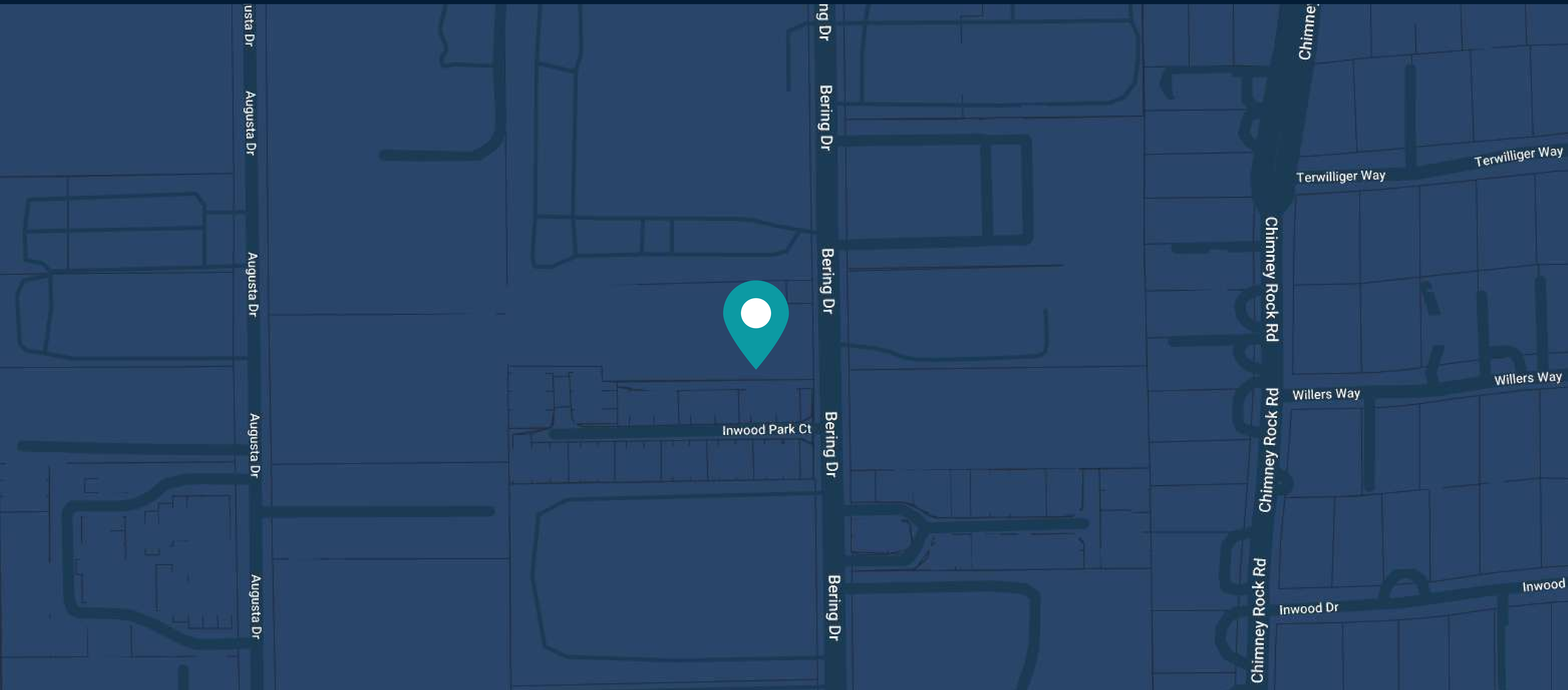
# Accolades





LOCATION

1800 Bering Drive  
Houston, Texas 77057



## Our Offices

### Corporate Headquarters

800 Newport Center Drive, Suite 700  
Newport Beach, CA 92660

(949) 417-6500

### Washington, DC Office

3003 Washington Boulevard, Suite 950  
Arlington, VA 22201

(202) 823-1230

