

# Sterling Plaza

At 19 stories, Sterling Plaza is the second-tallest office property in the coveted Preston Center submarket of the Dallas/Fort Worth area.



## 313,609

Rentable Square Feet

## Office

Property Type

This impressive Class A tower is LEED-EB certified and contains 313,609 square feet of rentable office space.

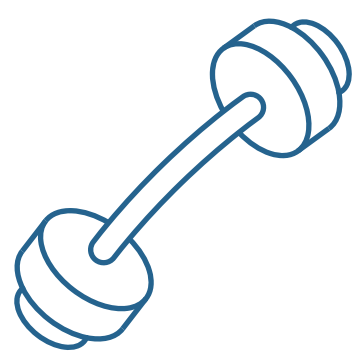
Built in 1984 and renovated from 2010 to 2013, the building is located within walking distance of the Park City Club and Hilton Hotel. Other amenities include a conference center and café on-site.

LOCATION	Dallas, Texas
PROPERTY TYPE	Office
YEAR BUILT	1984
NO. OF BUILDINGS	1
NO. OF STORIES	19
SQUARE FOOTAGE	313,609

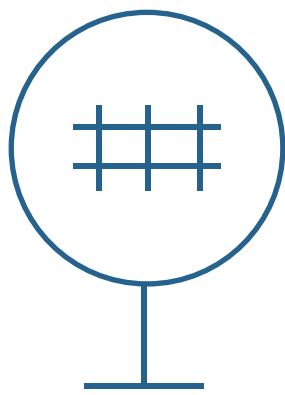


# Why People Love this Building

The Preston Center submarket is prominently located in close proximity to Dallas' most prestigious residential neighborhoods and is considered a perennial leader in Dallas in terms of occupancy and rental rates.



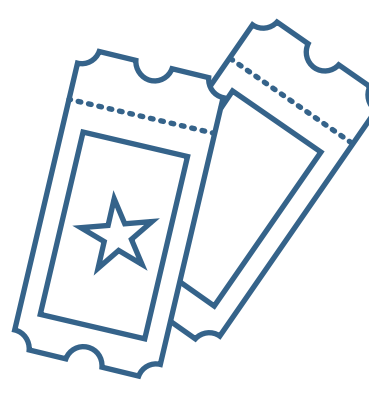
Fitness Center



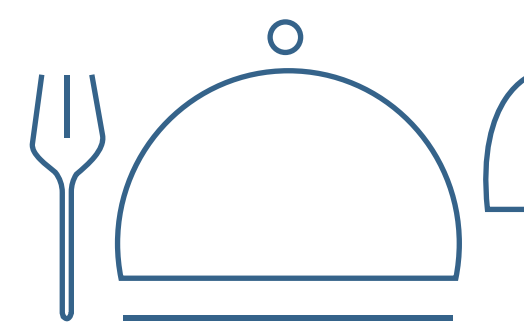
Transportation  
Nearby



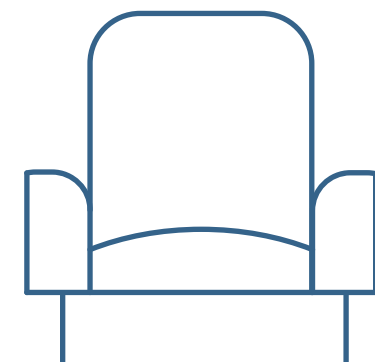
Shopping  
Nearby



Entertainment  
Nearby



Restaurants  
Nearby



Tenant Lounge

Accommodation Nearby

Concierge Service

Free Bike Sharing Program

On-Site Bank

On-Site Parking

Amenity Shuttle

Conference Center

Freeway Access

On-Site Café

On-Site Storage

Bike Storage

Day Care Center Nearby

High-Speed Internet

On-Site Complimentary Coffee Station

Shoe Shine Station

Car Wash / Detail On-Site

Energy Management System

Major University Nearby

On-Site Management Office

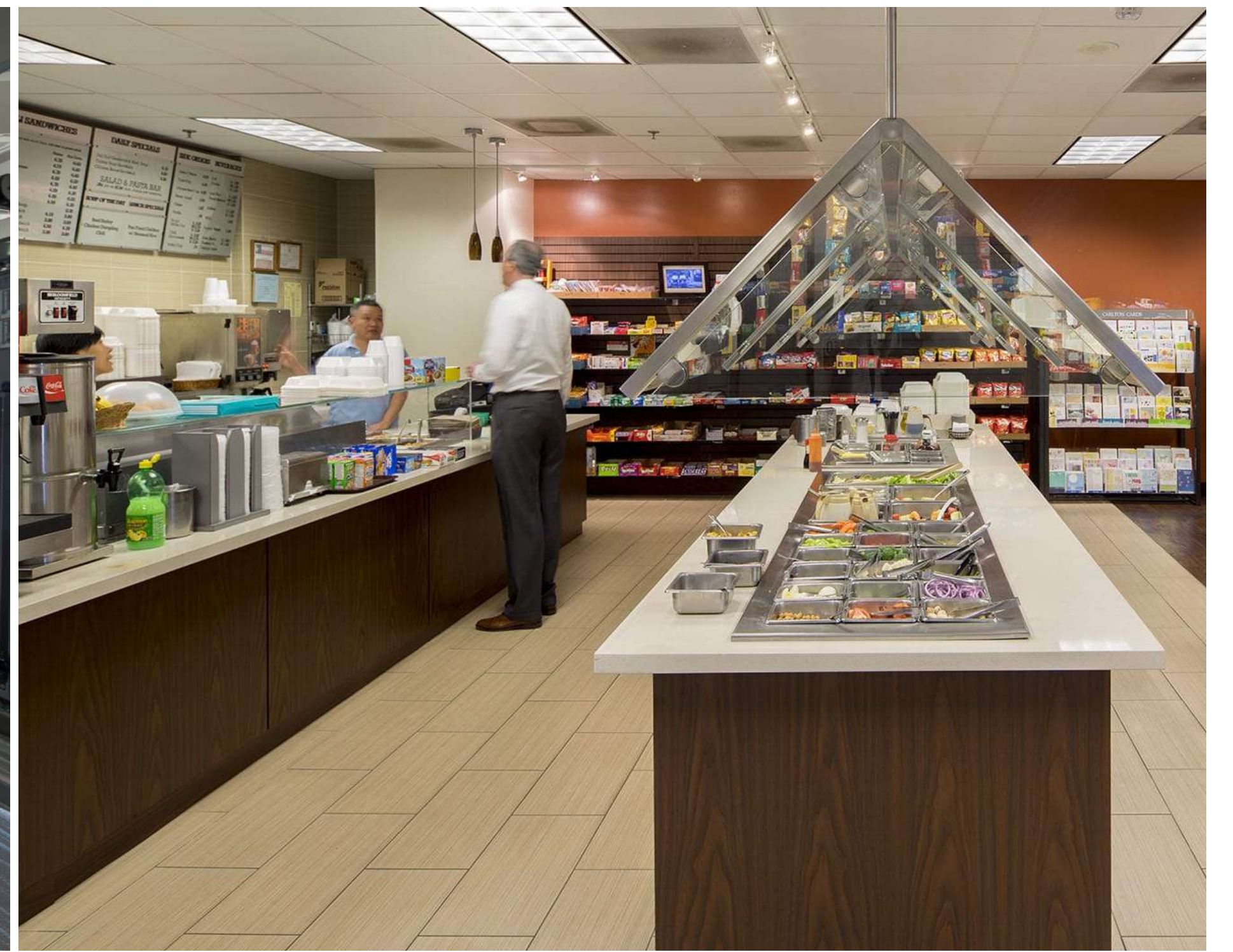
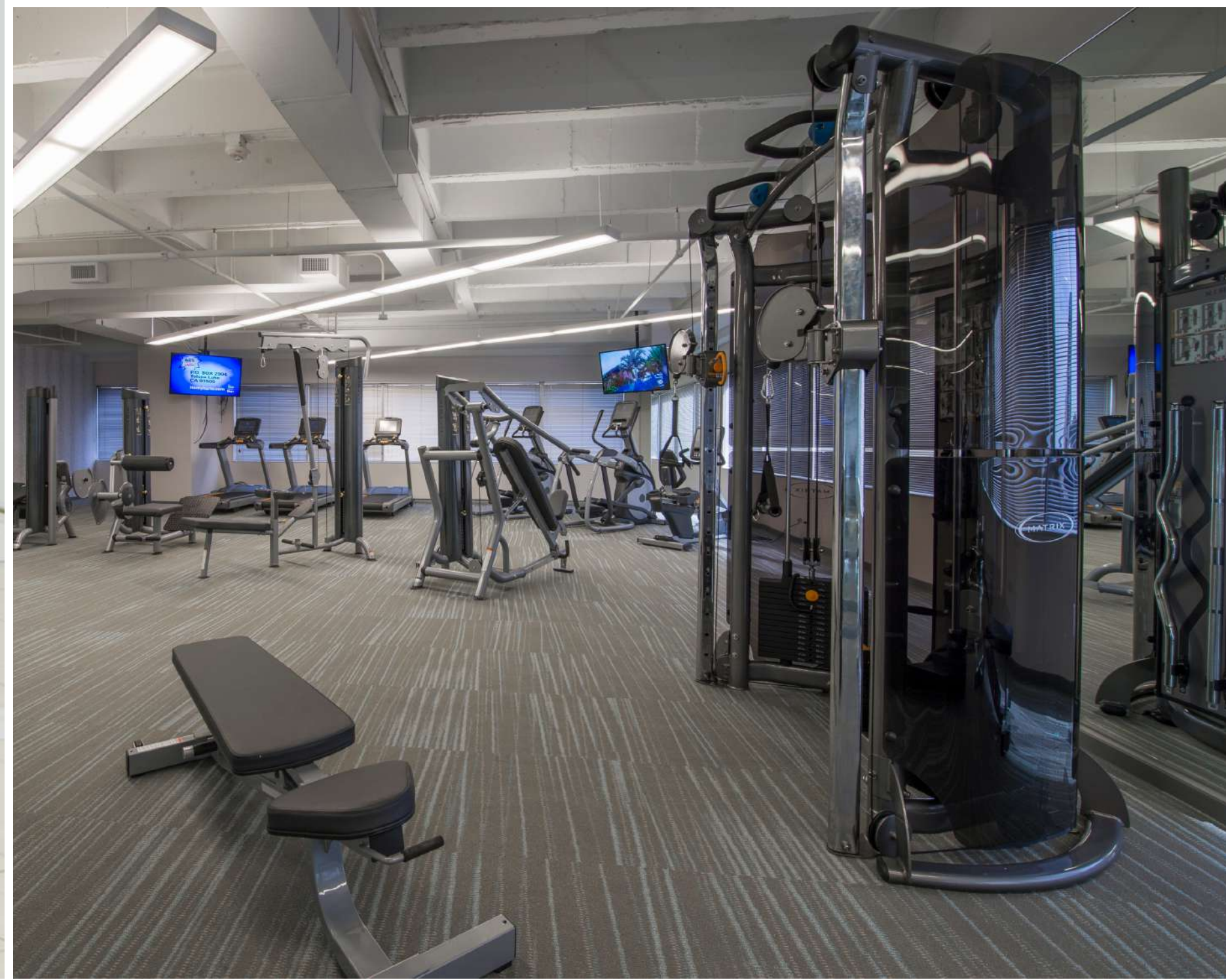
U.S. Postal Service



# Accolades



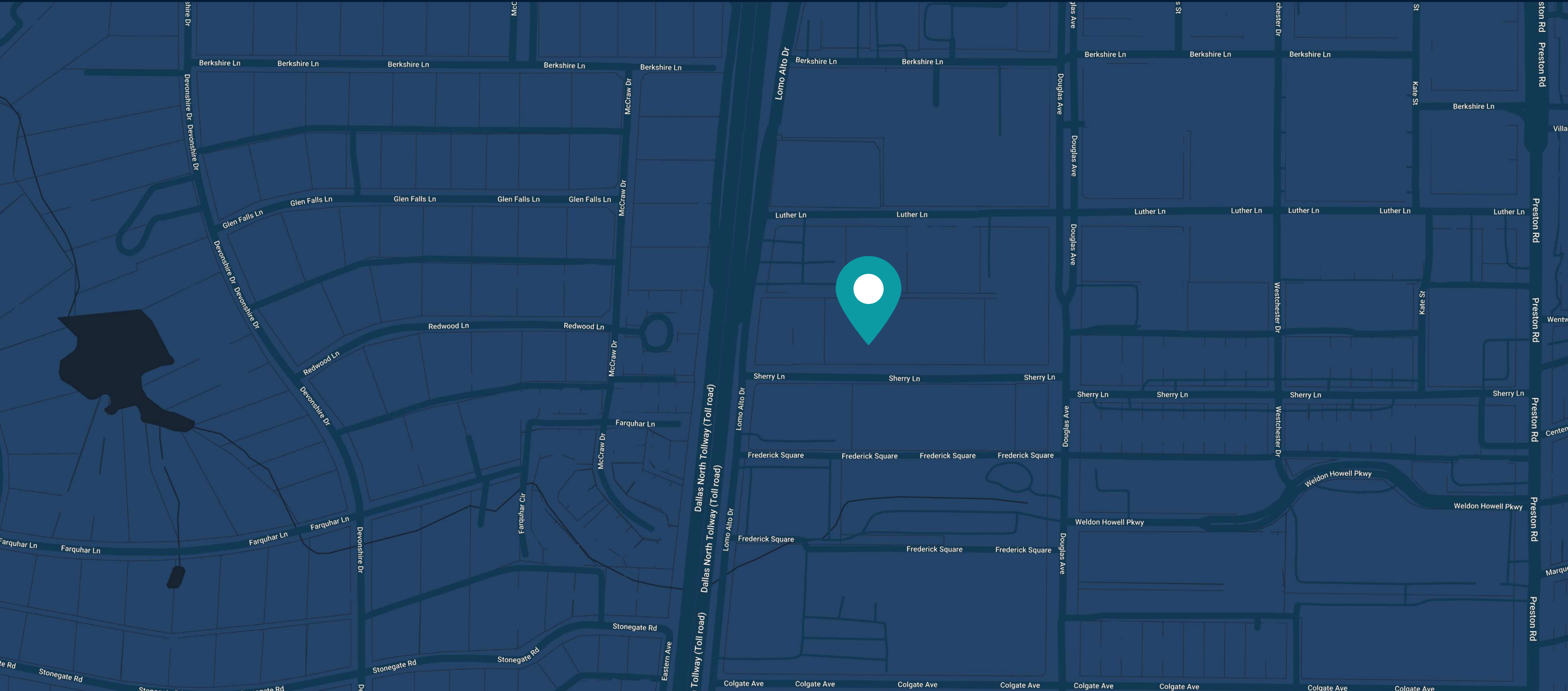






## LOCATION

# 5949 Sherry Lane Dallas, Texas 75225



## Our Offices

### Corporate Headquarters

800 Newport Center Drive, Suite 700  
Newport Beach, CA 92660

(949) 417-6500

### Washington, DC Office

3003 Washington Boulevard, Suite 950  
Arlington, VA 22201

(202) 823-1230