

Park Place Village

Park Place Village is a multi-tenant, mixeduse office and retail property located in Kansas City’s South Johnson County submarket.



484,002

Rentable Square Feet

Office/Retail

Property Type

With its integration of office, retail and residential space, Park Place Village offers a highly walkable live-work-play environment that is very attractive to today’s tenants.

The property includes 10 buildings that were developed in phases starting in 2007 and completed in 2013. Park Place Village includes a dynamic mix of tenants and offers many amenities including boutique shops, upscale restaurants and cafés. The surrounding area features parking garages, the Aloft Hotel, 120 apartments, 30 townhouses and 27 lofts.

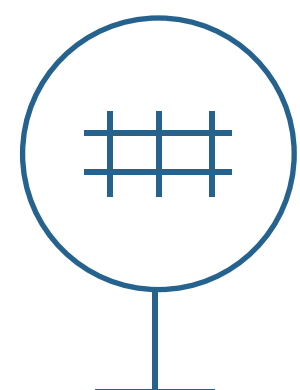
LOCATION	Leawood, Kansas	NO. OF BUILDINGS	10
PROPERTY TYPE	Office/Retail	SQUARE FOOTAGE	484,002
YEAR BUILT	2013		

Why People Love this Building

Future planned phases of development for the surrounding area include another hotel and additional multifamily rental housing. The lifestyle available to tenants at Park Place Village is unique for this Kansas City submarket.



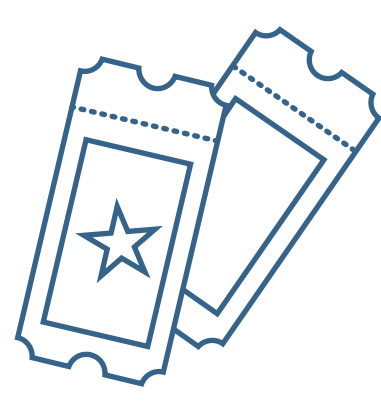
Fitness Center



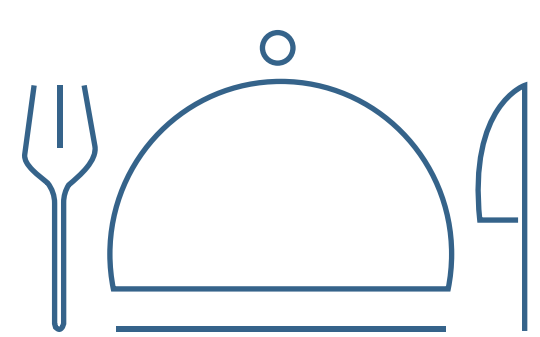
Transportation
Nearby



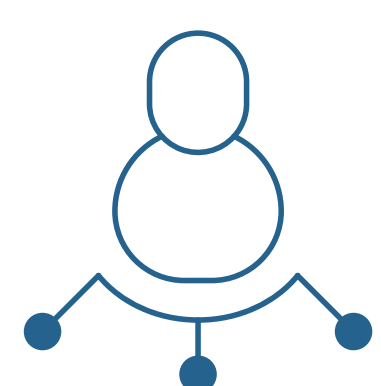
Shopping
Nearby



Entertainment
Nearby



Restaurants
Nearby



On-Site
Management Office

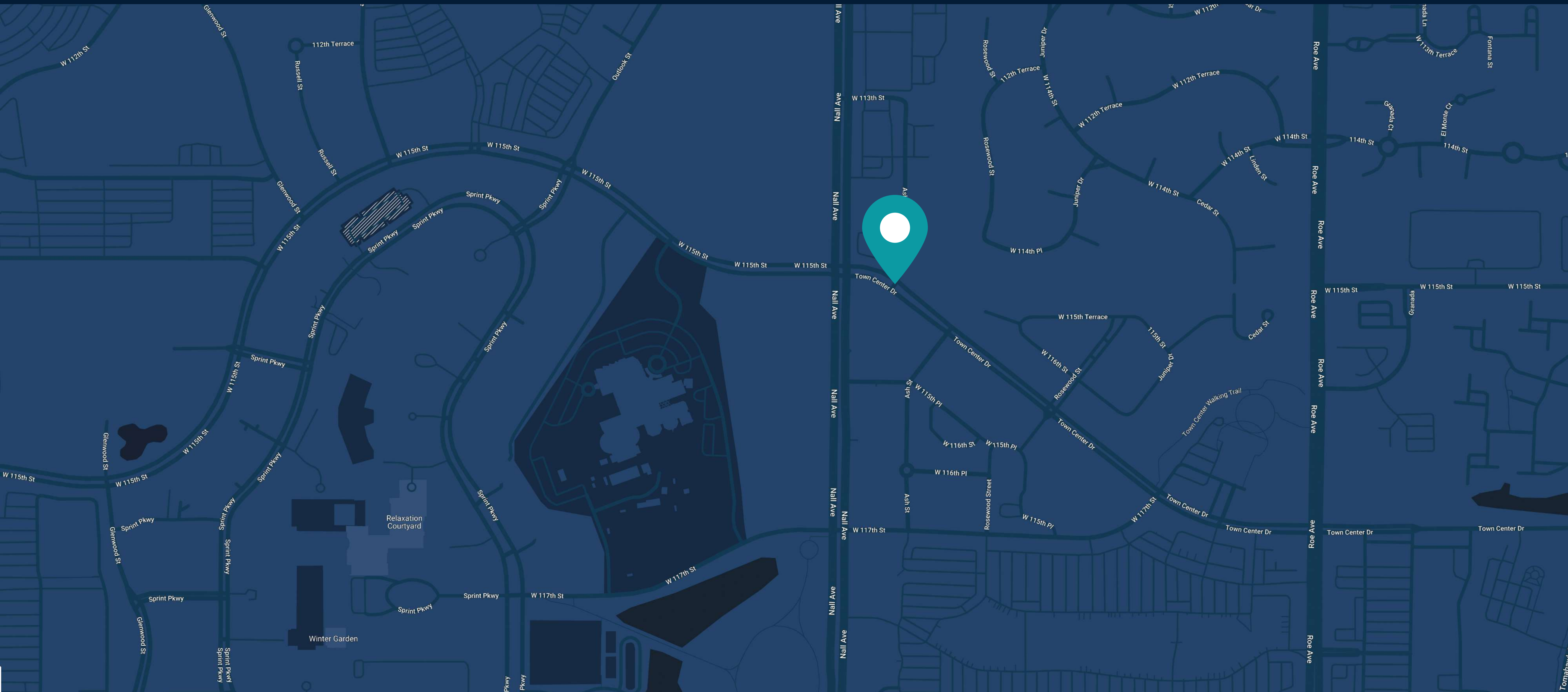
Accommodation Nearby	High-Speed Internet
Banking Nearby	On-Site Parking
Energy Management System	On-Site Storage
Bike Storage	Security
EV Car Charging Stations	Rooftop View Terrace
Event Facilities	U.S. Postal Service





LOCATION

11500 Ash Street, Nail Avenue Leawood, Kansas 66211



Our Offices

Corporate Headquarters

800 Newport Center Drive, Suite 700
Newport Beach, CA 92660

(949) 417-6500

Washington, DC Office

3003 Washington Boulevard, Suite 950
Arlington, VA 22201

(202) 823-1230