

60 South Sixth

60 South Sixth is a Class A, 710,332 square foot, LEED-EB Gold, BOMA 360, 40-story office tower located along the vibrant Nicollet Mall in the heart of downtown Minneapolis.



710,332

Rentable Square Feet

Office

Property Type

Constructed in 1991 and renovated in 2015, 60 South Sixth previously RBC plaza, is a core trophy-quality office investment leased to a diverse mix of tenants. Several large investment-grade companies anchor the property.

The exterior of the tower is comprised of a striking and sophisticated glass and aluminum design with an Italian marble and granite lobby on the interior. Floor plans are flexible with large glass lines and great views. Building amenities include on-site retail, a three-level underground professionally-managed valet public parking facility, three climate-controlled skyway connections, and immediate access to the adjacent 5th Street Light Rail Station (easy airport access) and bus routes. Current building amenities include a fitness center, yoga room, bicycle storage, locker rooms, conference rooms, open lounge areas, and a valet lobby.

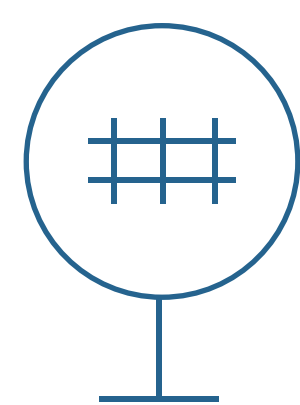
LOCATION	Minneapolis, Minnesota	NO. OF BUILDINGS	1
PROPERTY TYPE	Office	NO. OF STORIES	40
YEAR BUILT	1991	SQUARE FOOTAGE	710,332

Why People Love this Building

The Minneapolis Light Rail Transit runs directly to the north of 60 South Sixth.



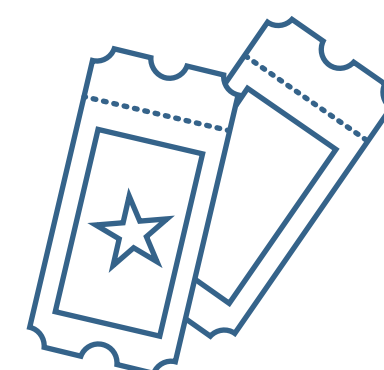
Fitness Center



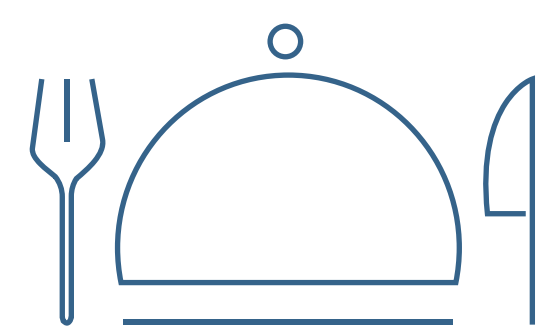
Transportation
Nearby



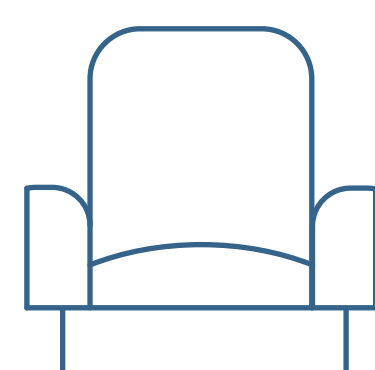
Shopping
Nearby



Entertainment
Nearby



Restaurants
Nearby



Tenant Lounge

Accommodation Nearby

Car Wash / Detail On-Site

Day Care Center Nearby

High-Speed Internet

On-Site Bank

On-Site Parking

Security

Wine Lockers

Bike Storage

Conference Center

Energy Management System

Major University Nearby

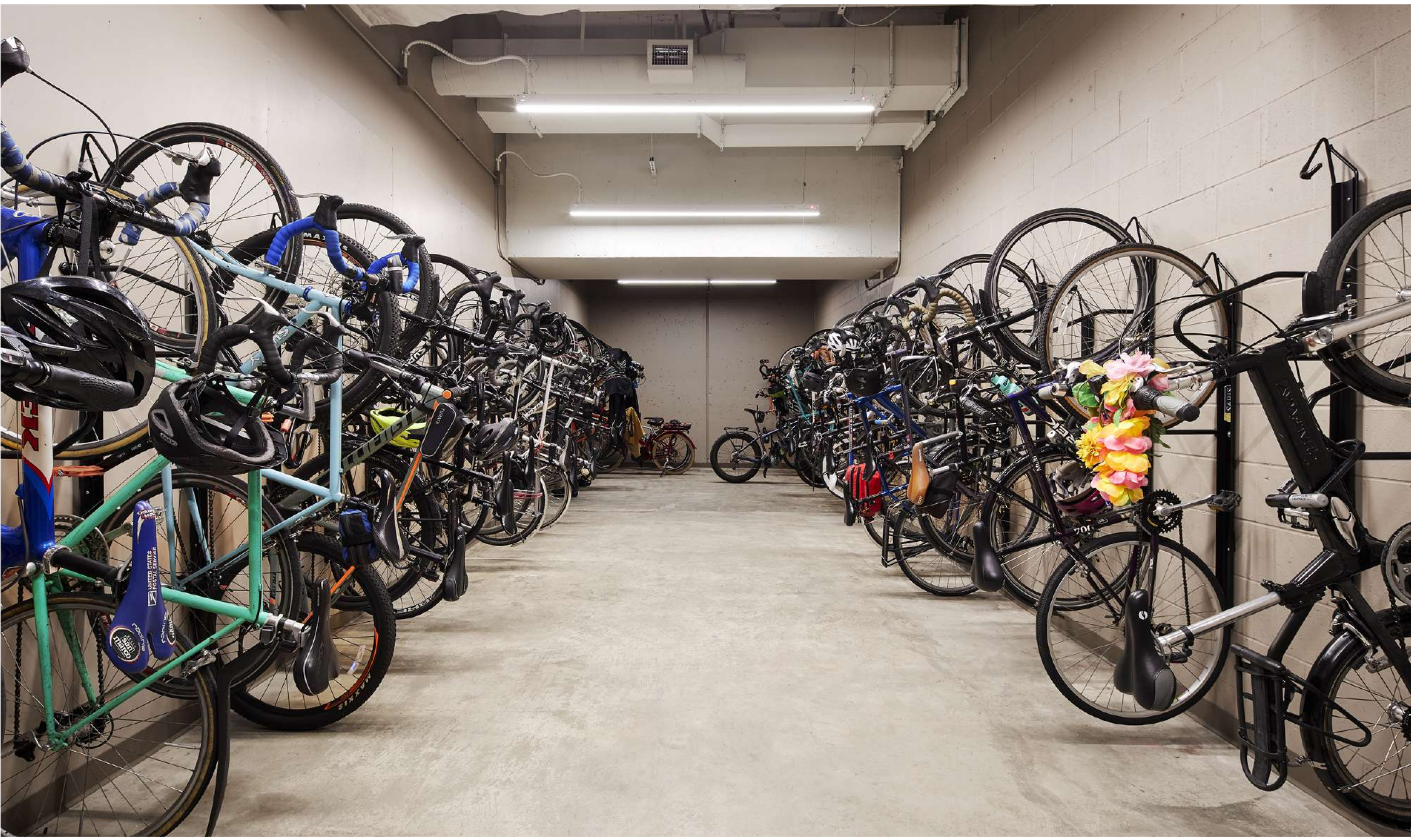
On-Site Management Office

On-Site Storage

U.S. Postal Service



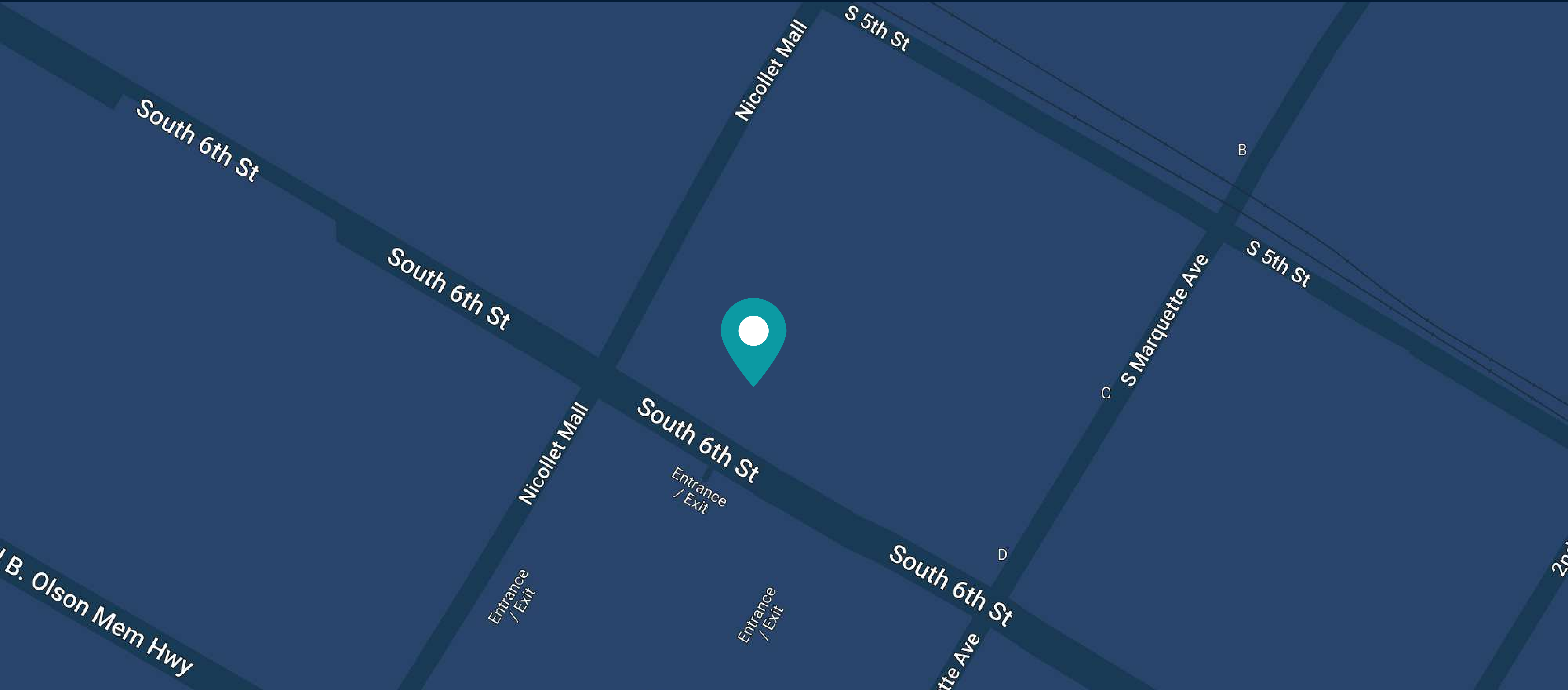
Accolades





LOCATION

60 South 6th Street
Minneapolis, Minnesota 55402



Our Offices

Corporate
Headquarters

800 Newport Center Drive, Suite 700
Newport Beach, CA 92660

(949) 417-6500

Washington,
DC Office

3003 Washington Boulevard, Suite 950
Arlington, VA 22201

(202) 823-1230